

LEADING THE NEW ERA OF 600W+ MODULES

CANADIAN SOLAR

HiKu7 / BiHiKu7 / TOPBiHiKu7

UNPACKING INSTRUCTIONS

TOPBiHiKu7 – UP TO 695 W



**Step
00****Special instructions before unpacking**

CS7N & CS7L modules are packed vertically in portrait orientation using an innovative packaging system.

1) **For rooftop projects:** NOTE! It is not allowed to carry the original unpacked pallet onto the roof. Please unpack the pallet, take the modules out one by one, then carry them to the roof horizontally as depicted in image A or B shown as below, or other methods which ensure module safety.

2) **For other projects:** The unpacking process should strictly abide by the unpacking steps as follows. The number of stacked modules is no more than 12.

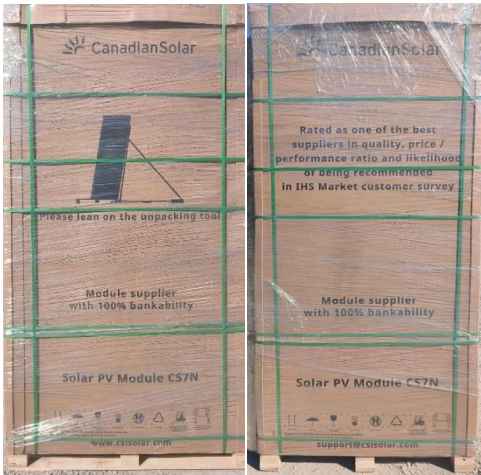
3) **Unpacking tool:** Must use unpacking rack or other unpacking tool that can help safely unpack the modules. Must wear safety gloves, helmet and shoes.

**Image A****Image B**

**Step
01**

Place the pallets on flat ground

Please place pallets on flat ground. Ground inclination should not exceed 4°.



Flat ground



Inclination > 4°



Please make sure the longer side of the wooden pallet is parallel to the slope



Unpacking rack



Modules and unpacking rack

**Step
02**

Shipping and parts list of unpacking rack

Take off the unpacking rack and then take out all parts of the rack listed below (unpacking rack attached on the pallet or sent separately):



Attached to pallet



Horizontally

Parts list of the unpacking rack:



Inclined strut
x1
(part①)

Base
x1
(part②)

Vertical strut
x1
(part③)

Cross-bar
x1
(part④)

Stainless
steel tube
x2
(part⑥)

Lock for
crossbar
x2
(part⑦)

Lock for
wooden pallet
x2
(part⑤)

Screw x8

Step
03

Assembling of unpacking rack

Assembling process:

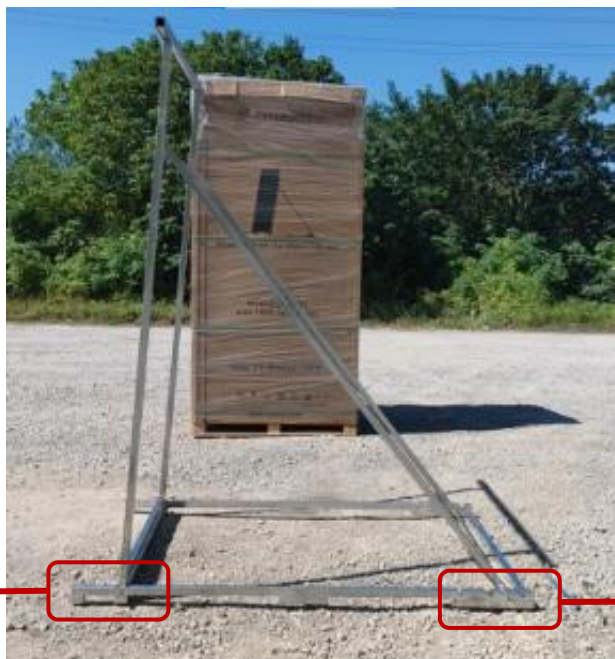
Step 3.1: Insert cross-bar ④ into vertical strut ③.



Step 3.2: Align the holes in vertical strut ③ with those in base ②. Insert stainless steel tube ⑥ into the holes and fix with screws.



Step 3.3: Put the crossbar side of inclined strut ① in the slot of the base ②. Align the holes on both inclined strut ① and vertical strut ③. Insert stainless steel tube ⑥ into the holes and fix with screws.



See step 6
in page 7

See step 5
in page 6

**Step
04**
Selecte the side to face the unpacking rack

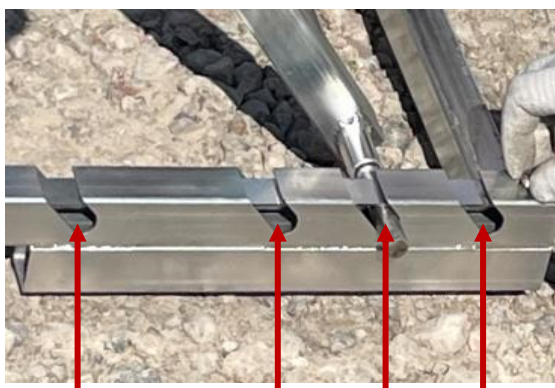
Find the side with the printed logo of the unpacking rack and face it towards the rack.


Attention:

- The logo is only printed on one side of the pallet


**Step
05**
Select position based on different slope

Adjust the right angle of the rack according to the slope towards the side with the printed rack logo. Insert the base lock ⑦ and secure with screws.



Position ①

②

③

④

Attention:

- The four position on the base correspond with positions: ① = 0-2 degrees, ② = 4-6 degrees, ③ = 6-8 degrees, ④ = 8-10 degrees of the slope respectively
- Suggested angle of module pallet range: 4-8°

**Step
06**
Insert unpacking rack

Insert the unpacking rack from the side with the printed rack logo under the wooden pallet. Then, put the “L” shape lock ⑤ into base ② of wooden pallet to prevent rack from moving away from the module pallet.



“L” shape lock on the pallet foot


Attention:

- No unpacking operation shall be carried out when the wind speed is above 40 km/h
- Please save the lock for wooden pallet for repeated use.

**Step
07**
Remove the wrapping film

Tear off all the shrink-wrap film covering the box except for the top cover.


Attention:

- Do not remove the wrapping film on the top cover, and later remove it together with the top cover.

**Step
08****Remove outer packaging straps**

Cut off all the packing straps outside the packing box.

**Attention:**

- Take additional care when cutting straps; strap may recoil.

**Step
09****Remove the outside cardboard beams and top cover**

Remove the cardboard beams on corners of the pallet, then use the cardboard beam to remove the top cover.

**Attention:**

- Ensure no one else is standing next to the pallet prior to removing the top cover.

**Step
10**

Open the carton

Open the carton from the “Unpack here” corner. Fold the other three sides back.



Attention:

- Please start with “Unpack here”.
- The other three sides are suggested to be torn off (when the wind is strong).

**Step
11**

Remove the inner packing straps, push the modules towards the unpacking rack

First, cut the horizontal straps and keep the vertical straps.

Please stand on both sides of the pallet.

Cut 2 of the 4 vertical straps (on each side).

Push the modules to the rack, cut all remaining straps, remove the tape.



Cut horizontal straps



Cut 4 vertical straps and push modules to the rack



Cut all the straps

Attention:

- Take additional care when cutting straps; strap may recoil.
- Please hold the pallet while cutting the vertical straps

Step
12

Take out the modules: one by one

Once the package is opened, please take out modules one by one until empty.



Attention:

- One person needs to hold the remaining vertical modules while unpacking them
- Handle modules by holding on to both sides at the same time
- Separate remaining materials for proper recycling
- Do not remove the tape that secures connectors while unpacking

Place the modules horizontally on the pallets:

- Two wooden pallets can be jointed as below, and a carton padded above it.
- Make sure the bottom module's front side looks upwards, and the rest of the modules' front side downward.

Note: For the rooftop project, it is recommended to order a special pallet for better placement and transportation. Take precautions against rain and moisture.



Jointed wooden pallets



The bottom module's front side should face upward



Package damaged



Module damaged

Attention:

Please take photos and contact the local sales/customer service staff at first time if you encounter with a damaged package or modules or have any questions regarding the unpacking process, please feedback to the service mailbox, support@csisolar.com.

If the user does not unpack the module according to the steps specified in this manual, CSI shall not assume any responsibility for any losses incurred therefrom including but not limited to personal and property damage.

LEARN MORE



Unpacking video



Bracket assembly



How modules are made and tested

Scan to follow us



Facebook



Instagram



LinkedIn



Twitter

Leading the New Era of 600W+ Modules
Canadian Solar HiKu7, BiHiKu7 and TOPBiHiKu7 Unpacking Instruction

CSI Solar Co., Ltd.

www.csisolar.com marketing@csisolar.com

Jun. 2023. All rights reserved. V5.0_EN